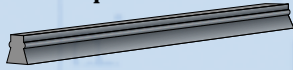


The Components

Dovetail Spline

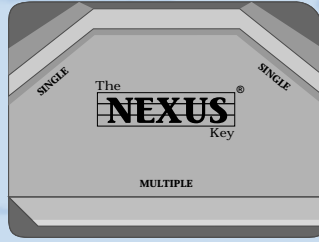


Slides into FacePlates, SlideHolder or Cover Holder. Snap fits to MountPlate or BasePlate.

T-Spline



Slides into InsertHolder, InsertPlates, EdgePlate or AppendPlate. Snap fits to Mountplate or BasePlate.



Nexus® Key. Necessary to remove FacePlate.

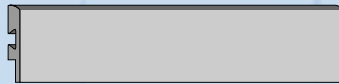


Divider
(13mm - 2mm Face)

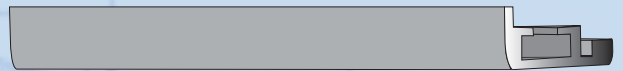
Insert Frame Top
(20mm Side - 8mm Face)



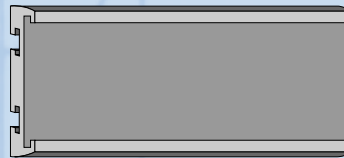
SlideHolder
(10mm Face)



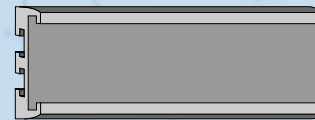
SlidePlate
(25mm Face)



Insert Frame Side / Bottom
(20mm Side - 8mm Face)

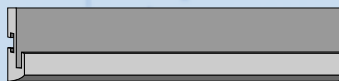
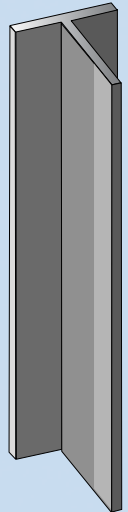


20mm InsertPlate
(2mm Face)

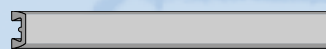


15mm InsertPlate
(2mm Face)

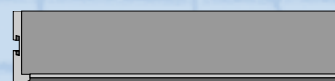
Double Rail
(14mm x 19mm - 2mm Face)



InsertHolder
(10mm - 3mm Face)

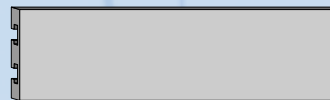
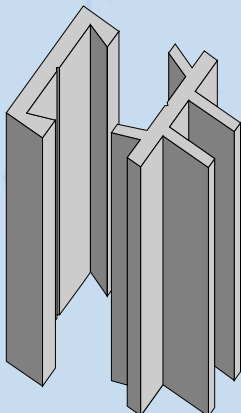


AccentPlate
(5mm Face)



EdgePlate
(10mm - 0.5mm Face)

WallHolder
(15mm x 15mm)

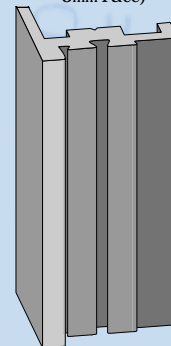


AppendPlate
(12mm)

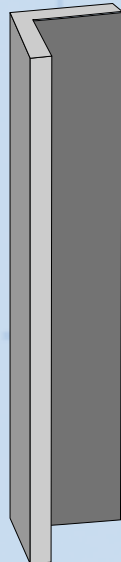
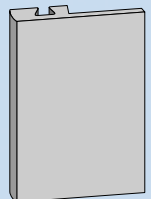


Rail
(8mm x 19mm - 2mm Face)

CoverFrame
(18mm x 20mm - 3mm Face)



CoverHolder
(17mm Face)



Frame
(15mm x 15mm - 3mm Face)